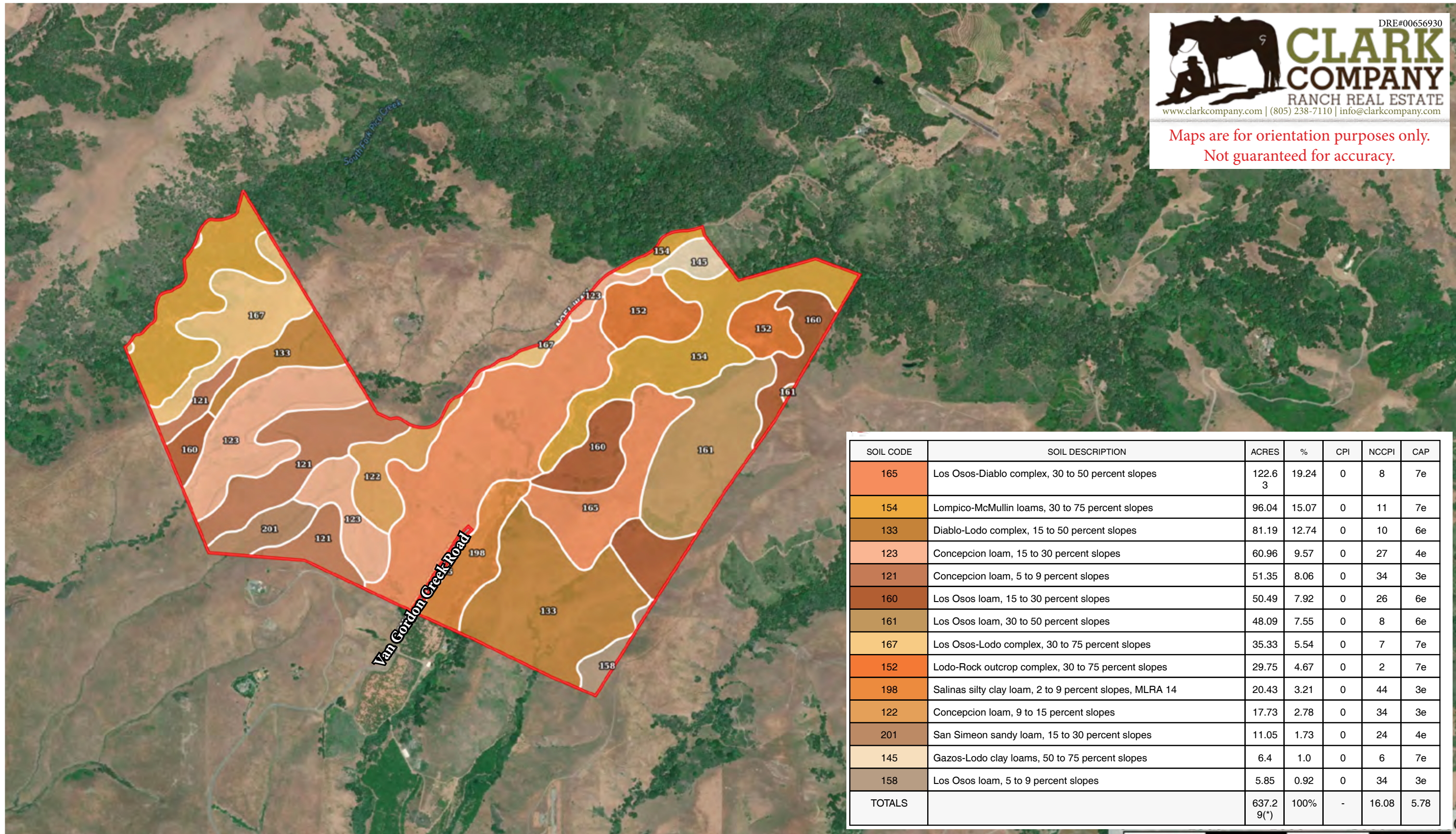


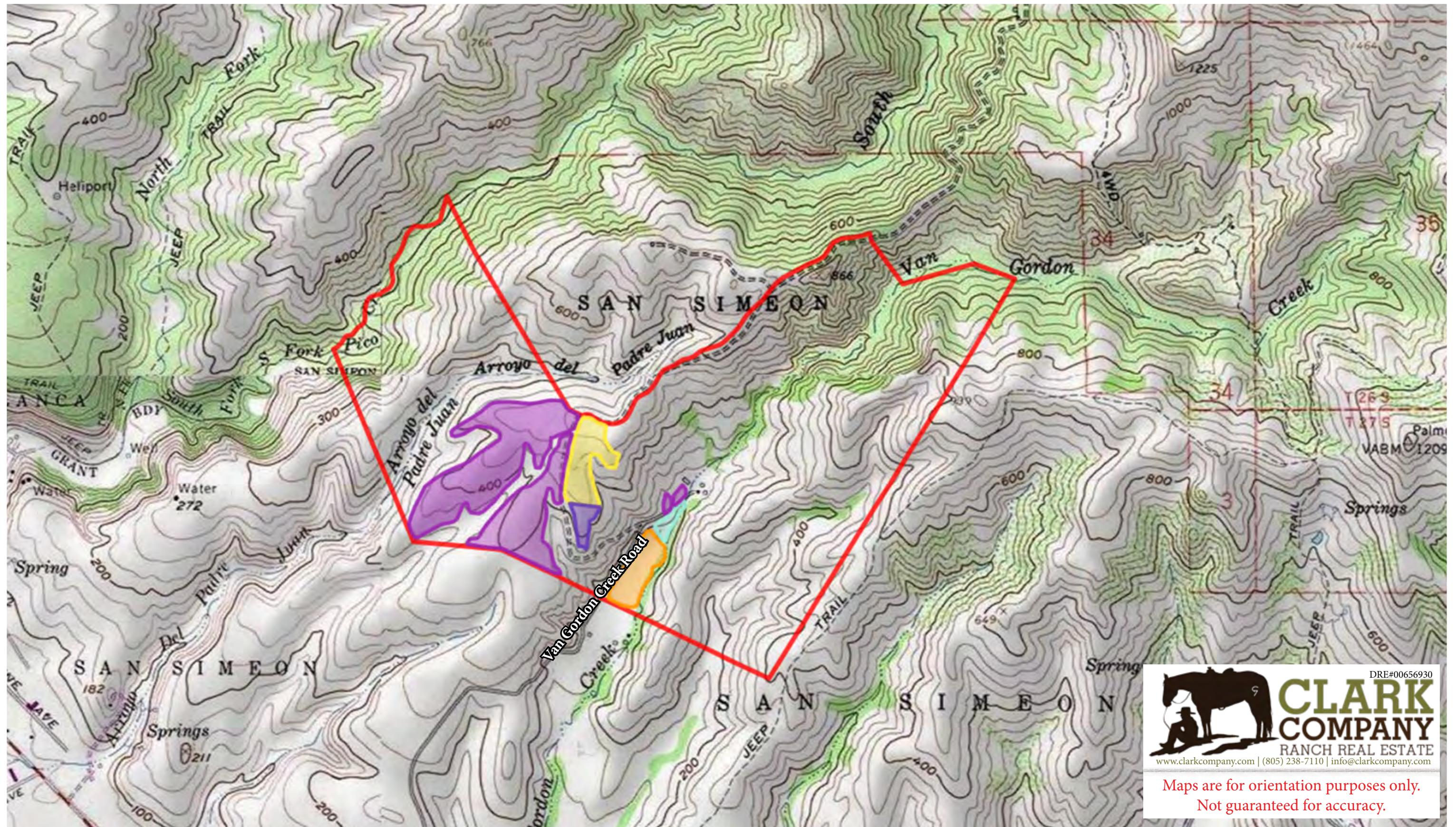


Maps are for orientation purposes only.
 Not guaranteed for accuracy.



SOIL CODE	SOIL DESCRIPTION	ACRES	%	CPI	NCCPI	CAP
165	Los Osos-Diablo complex, 30 to 50 percent slopes	122.63	19.24	0	8	7e
154	Lompico-McMullin loams, 30 to 75 percent slopes	96.04	15.07	0	11	7e
133	Diablo-Lodo complex, 15 to 50 percent slopes	81.19	12.74	0	10	6e
123	Concepcion loam, 15 to 30 percent slopes	60.96	9.57	0	27	4e
121	Concepcion loam, 5 to 9 percent slopes	51.35	8.06	0	34	3e
160	Los Osos loam, 15 to 30 percent slopes	50.49	7.92	0	26	6e
161	Los Osos loam, 30 to 50 percent slopes	48.09	7.55	0	8	6e
167	Los Osos-Lodo complex, 30 to 75 percent slopes	35.33	5.54	0	7	7e
152	Lodo-Rock outcrop complex, 30 to 75 percent slopes	29.75	4.67	0	2	7e
198	Salinas silty clay loam, 2 to 9 percent slopes, MLRA 14	20.43	3.21	0	44	3e
122	Concepcion loam, 9 to 15 percent slopes	17.73	2.78	0	34	3e
201	San Simeon sandy loam, 15 to 30 percent slopes	11.05	1.73	0	24	4e
145	Gazos-Lodo clay loams, 50 to 75 percent slopes	6.4	1.0	0	6	7e
158	Los Osos loam, 5 to 9 percent slopes	5.85	0.92	0	34	3e
TOTALS		637.29(*)	100%	-	16.08	5.78

DERBYSHIRE
~ RANCH & VINEYARD ~ 8810 Van Gordon Creek Road | San Simeon, California 93452



DRE#00656930
CLARK COMPANY
RANCH REAL ESTATE
www.clarkcompany.com | (805) 238-7110 | info@clarkcompany.com

Maps are for orientation purposes only.
Not guaranteed for accuracy.

THE ENCLOSED INFORMATION HAS BEEN OBTAINED FROM SOURCES THAT WE DEEM RELIABLE; HOWEVER, IT IS NOT GUARANTEED BY CLARK COMPANY AND IS PRESENTED SUBJECT TO CORRECTIONS, ERRORS, PRIOR SALE, CHANGES OR WITHDRAWAL FROM THE MARKET WITHOUT NOTICE.

DERBYSHIRE
~ **RANCH & VINEYARD** ~ 8810 Van Gordon Creek Road | San Simeon, California 93452



DRE#00656930



CLARK
COMPANY
RANCH REAL ESTATE

www.clarkcompany.com | (805) 238-7110 | info@clarkcompany.com

Maps are for orientation purposes only.
Not guaranteed for accuracy.